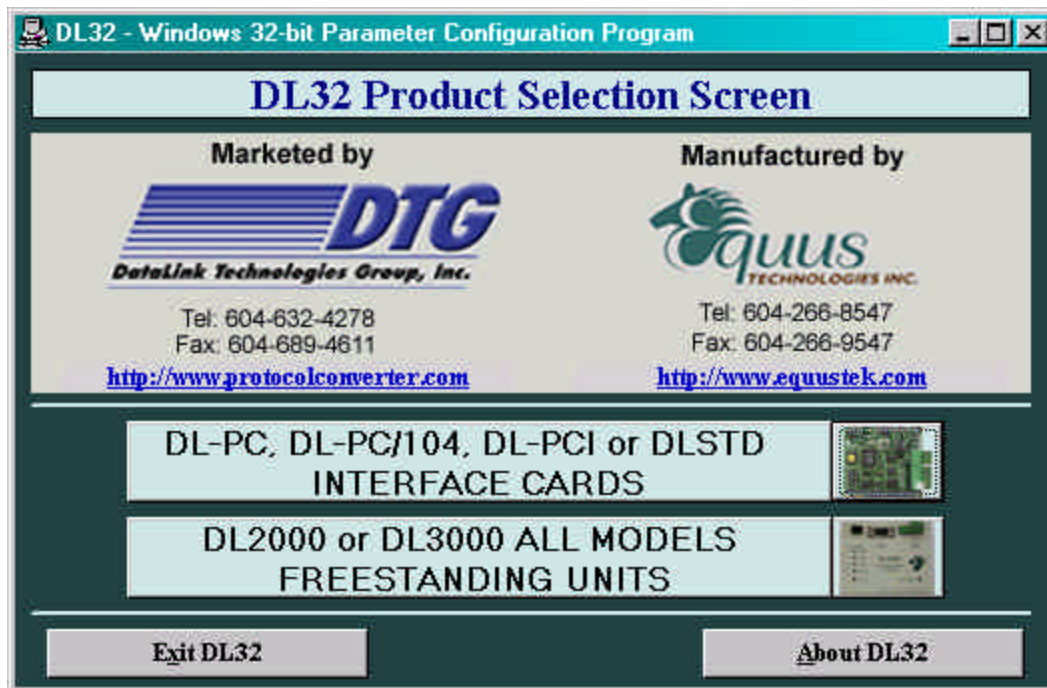
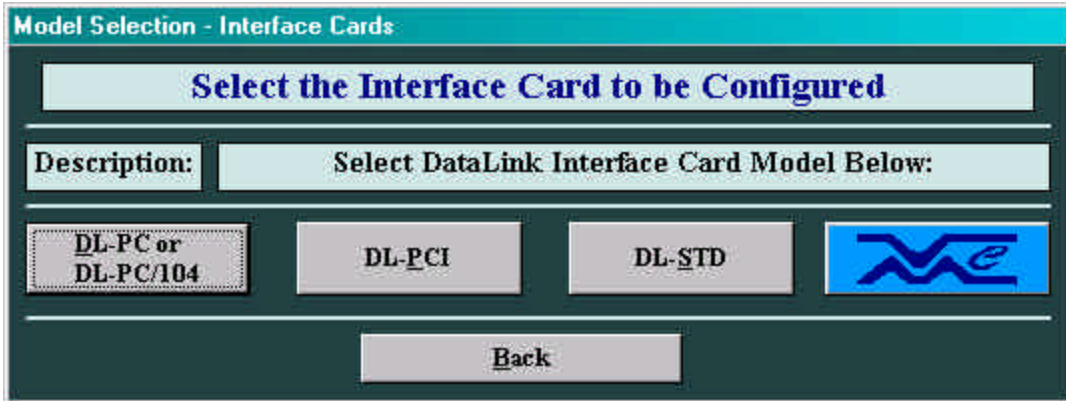


Changing DH Plus Card Address Using DL2

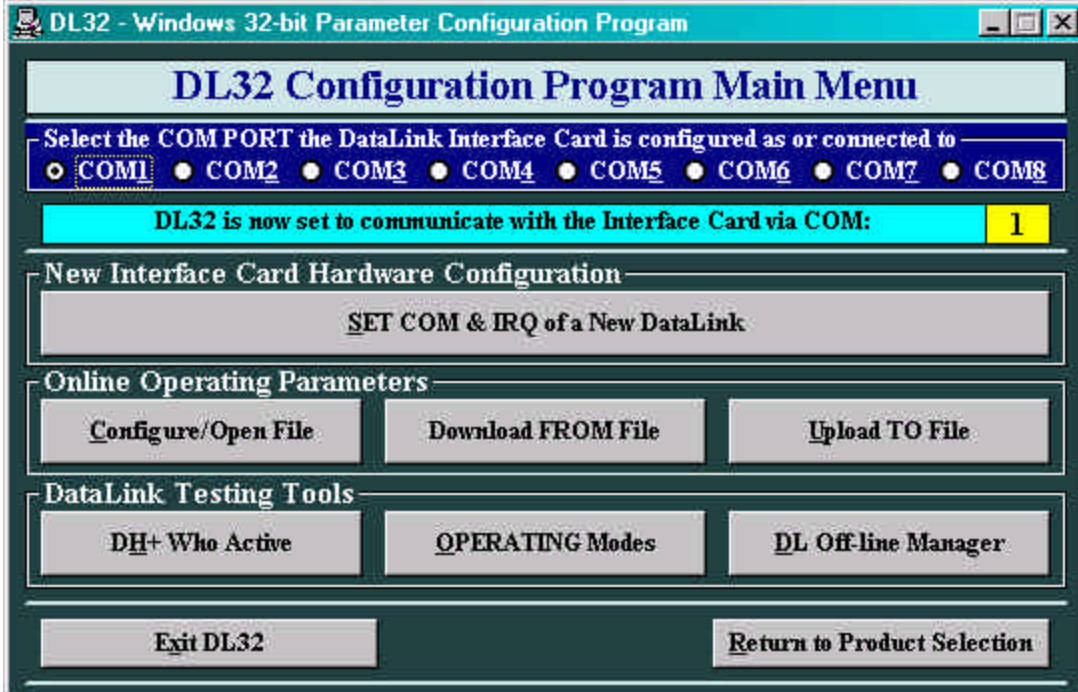
- 1) Ensure that DH+ Network is removed from the fieldserver.
- 2) Make up the RS232 cable necessary for communications to the DH+ Card as follows:
 - DL Port B Pin3 (Rx) to PC Com Port Pin 3 (Tx)[Pin 2 if 25 pin]
 - DL Port B Pin4 (Gnd) to PC Com Port Pin 5 (Gnd)[Pin 7 if 25 pin]
 - DL Port B Pin5 (Tx) to PC Com Port Pin 2 (Rx)[Pin 3 if 25 pin]
- 3) Power Up FSX40.
- 4) Download the DL32 software (V2.03) from the following website:
<http://www.protocolconverter.com/software.html>
- 5) Install DL32
- 6) On the configuration PC, go to Start->Programs ->Datalink->DL32 to run DH+ configurator.
- 7) In the DL32 window select button “DL-PC, DL-PC/104, DL-PCI or DLSTD INTERFACE CARDS”.



8) In the Interface Card window select button “DL-PC or DL-PC/104”.

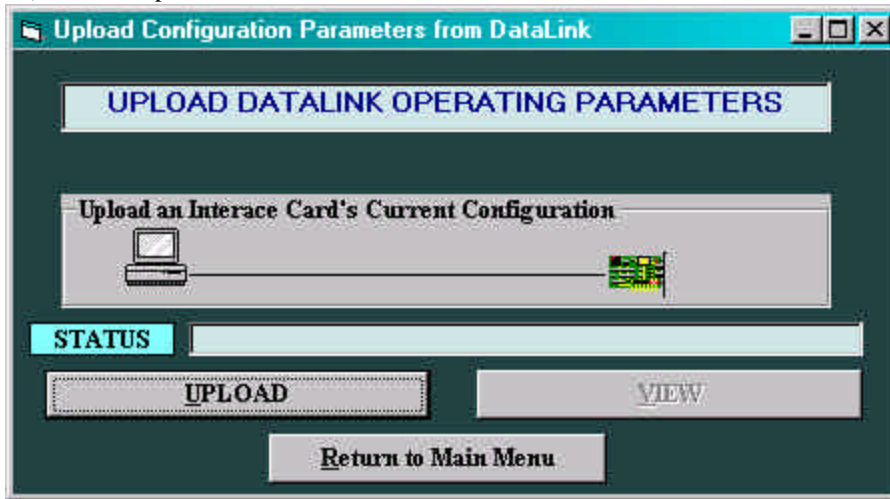


9) In the DL32 Configuration Program Menu select COM1 (Or the PC com port being used).



10) Then Select button “Upload to File”.

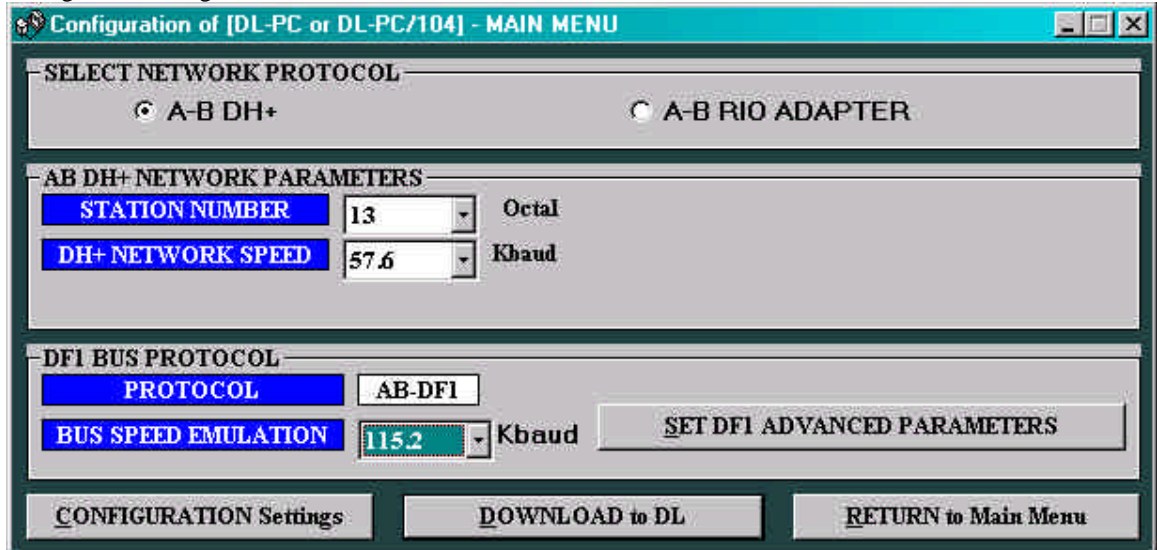
11) Select "Upload".



Note: If you get the following error, then you need to check your connections and cable.



- 12) After Selecting Upload you will be prompted to choose a file name and location for your configuration to be saved on the PC. Once the config has been saved, choose “View” to view the config. The Settings should look similar to this:



The screenshot shows a configuration window titled "Configuration of [DL-PC or DL-PC/104] - MAIN MENU". It contains the following sections and controls:

- SELECT NETWORK PROTOCOL:** Two radio buttons are present: "A-B DH+" (which is selected) and "A-B RIO ADAPTER".
- AB DH+ NETWORK PARAMETERS:** Two dropdown menus are shown: "STATION NUMBER" with the value "13" and "Unit" set to "Octal"; and "DH+ NETWORK SPEED" with the value "57.6" and "Unit" set to "Kbaud".
- DFI BUS PROTOCOL:** A "PROTOCOL" dropdown menu is set to "AB-DFI". Below it, a "BUS SPEED EMULATION" dropdown menu is set to "115.2" with "Unit" set to "Kbaud". To the right of these is a button labeled "SET DFI ADVANCED PARAMETERS".
- Footer:** Three buttons are located at the bottom: "CONFIGURATION Settings", "DOWNLOAD to DL", and "RETURN to Main Menu".

Note: At this point you can choose another station number (address) for the DH+ card. It is VERY important though, that the other settings remain the same as shown above.

Note: Station Number is entered in Octal here, and in decimal in the Fieldserver configuration file.

- 13) While in these menus, click on “Set df1 advanced parameters”. Verify that the settings are exactly as follows (If not, make the necessary changes):

DF1 ADVANCED PARAMETERS

PRESS BUTTONS TO TOGGLE THE FOLLOWING OPTIONS:

MESSAGE CHECK

BCC CRC

DUPLICATE MESSAGE

IGNORE ACCEPT

EMBEDDED RESPONSES

NONE EXECUTE

DIAGNOSTICS

EXECUTE PASS

CONFIGURATION

POINT-POINT / FULL DUPLEX

MULTI-DROP / HALF DUPLEX

HANDSHAKING LOOPBACK

NONE RTS TO CTS

ACCEPT

- 14) Choose “ Accept” to get to the previous menu. The press “Downlod to DL”. Your configuration is now enabled in the card.
- 15) In the fieldserver configuration file (csv file), make sure the System_Station_ Address is set to the decimal equivalent of the Octal address configured in DL2, e.g:

```

//-----
//
//  Common Information
//
Bridge
Title,          System_station_address
Example csv, 11
```